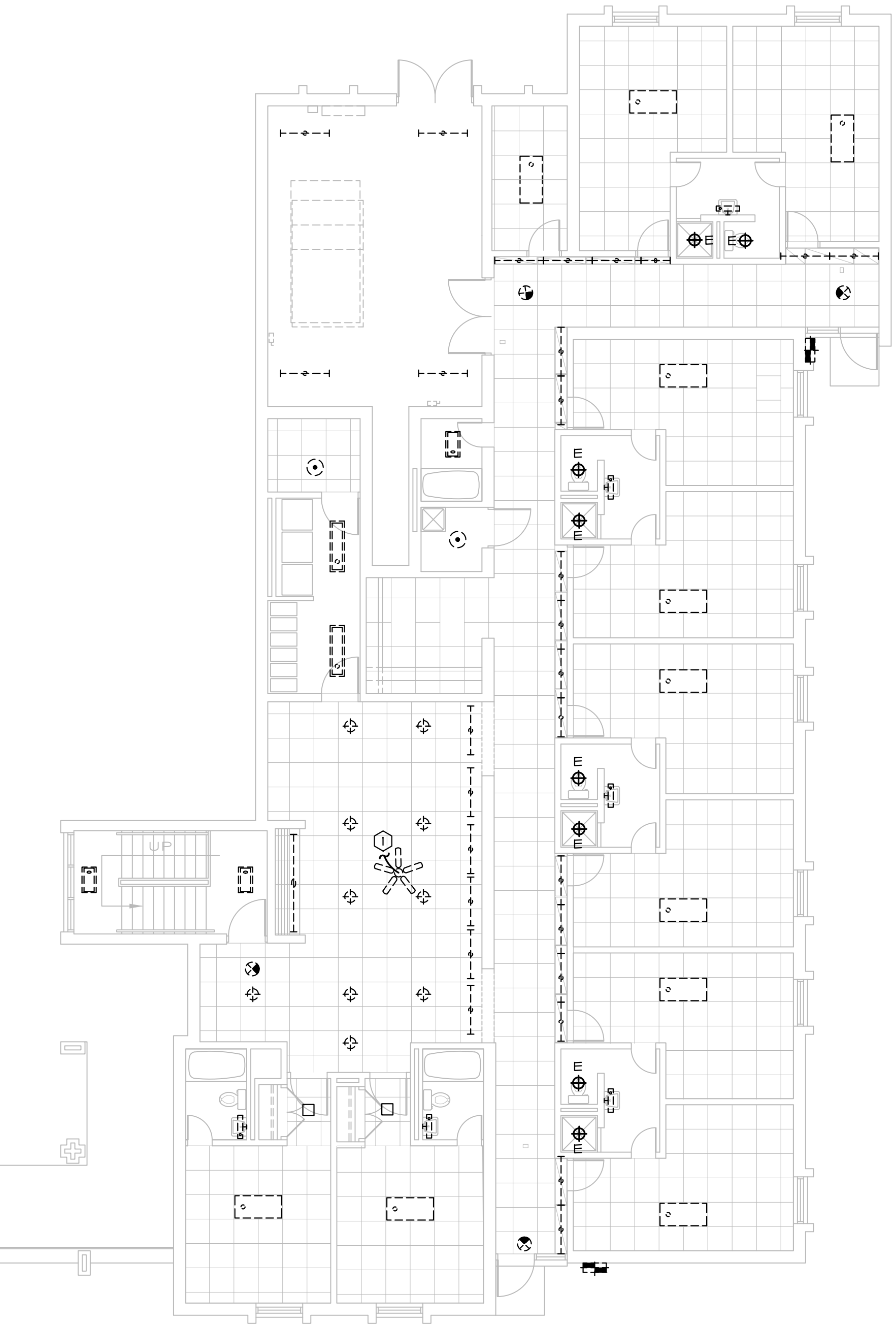
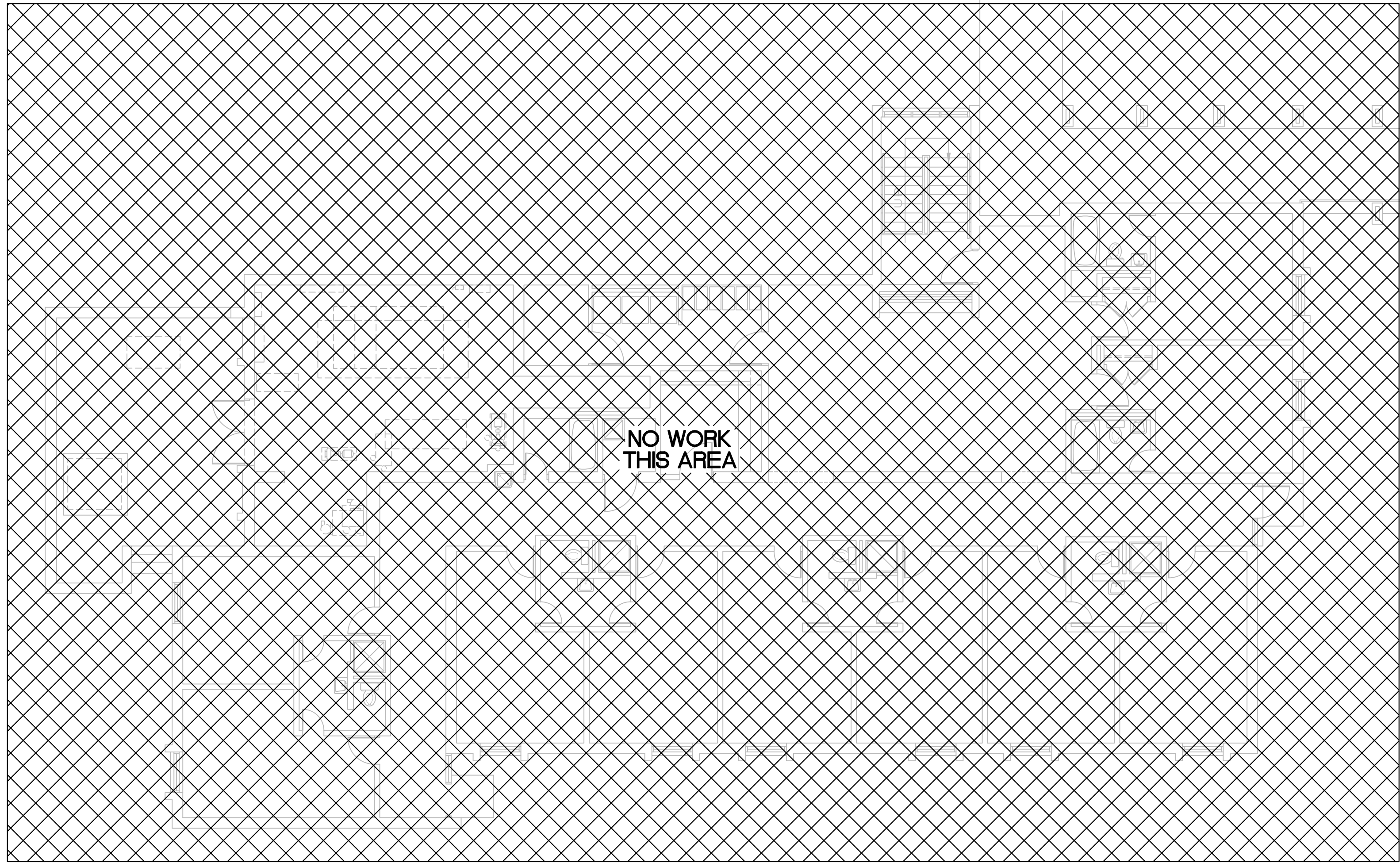


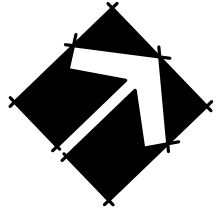
KEY NOTES


1 EXISTING FAN TO BE REMOVED AND REINSTALLED WITH NEW LIGHTING



DEMOLITION PLAN - BUILDING D1 1

SCALE: 1/8" = 1'-0"

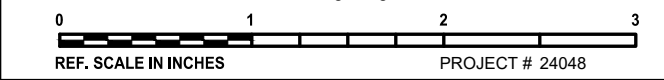




3221 BLUE RIDGE ROAD, STE. 113
RALEIGH, NC 27612
P: 919.571.1111

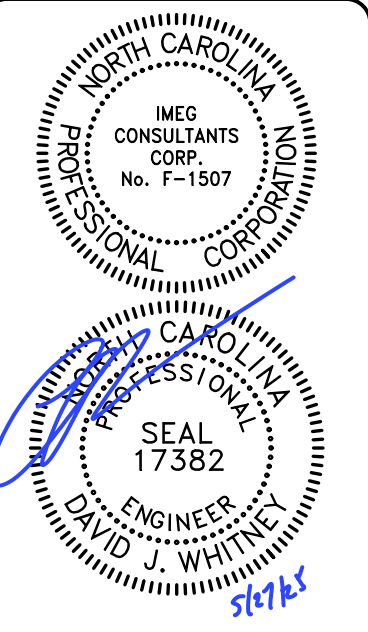
www.imegcorp.com

IMEG RESERVES PROPRIETARY RIGHTS, INCLUDING COPYRIGHTS, TO THIS DRAWING AND THE DATA SHOWN THEREON. SAID DRAWING AND/OR DATA ARE THE EXCLUSIVE PROPERTY OF IMEG AND SHALL NOT BE USED OR REPRODUCED FOR ANY OTHER PROJECT WITHOUT THE EXPRESS WRITTEN APPROVAL AND PARTICIPATION OF IMEG.
©2024 IMEG CONSULTANTS CORP.
North Carolina Design Registration #F-1507



0 1 2 3
FEET
SCALE IN INCHES PROJECT # 24048

REVISIONS	
FOR CONSTRUCTION	5/27/25



ATLANTEC
ENGINEERS, PA
IMEG
3221 BLUE RIDGE ROAD, SUITE 113
RALEIGH, NC 27612
919.571.1111
24048

PREPARED FOR:
NC DEPARTMENT
OF INSTRUCTION
SCO #
24-27792-01A

GOVERNOR MOREHEAD SCHOOL
SPRINKLER, ADA TOILET, LIGHTING
UPGRADES FOR DORMS A, B, + D
RALEIGH, NC

CONTENTS:
BUILDING D FIRST
FLOOR ELECTRICAL
DEMOLITION PLAN

DATE:
May 27, 2025

DESIGNER: SWM
ENGINEER: DJW

SHEET NO.
DE-103
OF